

Lam



This product is only suitable for well insulated spaces or occasional use!

OIL HEATER

FOH-YR11GR/FOH-YR11BG

Power: 2500W
Adjustable thermostat control
Overheat protection system

Thank you for purchasing this **FRAM** product!


1. INTRODUCTION

Before using the appliance, please read carefully this instruction manual and keep it for future reference. This product is only suitable for well insulated spaces or occasional use.

This instruction manual is designed to provide you with all required instructions related to the installation, use and maintenance of the appliance.

In order to operate the unit correctly and safely, please read this instruction manual carefully before installation and usage.

2. PACKAGE CONTENT

- 
- ➔ Oil heater
 - ➔ User manual
 - ➔ Warranty card

3. SAFETY INSTRUCTIONS

Before using the electrical appliance, the following basic precautions should always be followed including the following:

1. Read all instructions.
2. Before use, check that the voltage of your wall outlet corresponds to the one on the rating plate which is on the bottom of the appliance.
3. Do not operate the appliance with a damaged cord or after malfunction or has been damaged in any manner.
4. If the supply cord is damaged, it must be replaced by the manufacturer or its service agent or a similarly qualified person in order to avoid a hazard.
5. In order to avoid overheating, do not cover the heater.
6. Never leave the heater unattended while it is in use. Always turn the product to the OFF position and unplug it from the electrical outlet when not in use.
7. Extreme caution is necessary when any heater is used by or near children, invalids or elderly person and whenever the heater is left operating and unattended.
8. The heater must not be located immediately below an electrical socket-outlet.
9. Do not run cord under carpeting and do not cover cord with throw rugs, runners or the like. Arrange cord away from traffic area and where it will not be tripped over.
10. Do not operate the heater with a damaged cord or plug, or after the heater malfunctions, has been dropped, or damaged in any manner.
11. If the supply cord is damaged, it must be replaced by the manufacturer or its service agent or a similarly qualified person to avoid a hazard.
12. Avoid the use of an extension cord as this may overheat and cause a risk of fire.
13. Use the heater in a well-ventilated area. Do not insert or allow objects to enter any ventilation or exhaust opening. To prevent a possible fire, do not block air intakes or exhaust openings in any

manner. Do not use on soft surfaces, like a bed, where openings may become blocked. Use the heater on flat, dry surfaces only.

14. Do not place this heater near flammable materials, surfaces or substances, as there may be a risk of fire. Keep the above flammable materials, surfaces or substances at least 1m from the front of the product and keep them away from the sides and rear.

15. Do not use the heater in any areas where petrol, paint or other flammable liquids are stored e.g. Garages or workshops as a hot, arcing or sparking parts inside the heater.

16. Don't use this heater in the immediate surroundings of a bath, a shower or a swimming pool. Never locate the heater where it may fall into bathtub or other water container.

17. This heater is hot when in use. To avoid burns and personal injury, do not let bare skin touch hot surfaces. If provided, use handles when moving the product.

18. Be sure that no other appliances are in use on the same electrical circuit as your product as an overload can occur.

19. This heater is filled with a precise quantity of special oil.

20. Repair requiring opening of the oil container are only to be made by the manufacturer or his service agent who should be contacted if there is an oil leakage.

21. Regulations concerning the disposal of oil when scrapping the appliance have to be followed.

22. The heater should not be used in a room, of which the floor area is less than 5 M2.

23. The cord shouldn't be placed nearby the hot surface of the appliance.

4. *PRODUCT DESCRIPTION*

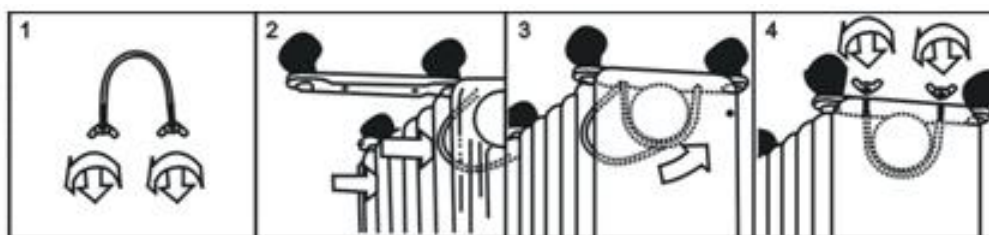


1. Carry handle
2. Thermostat knob
3. Power switch
4. Cord storage
5. Radiant fins
6. Castor

5. ASSEMBLY INSTRUCTIONS

The heater is packaged with the feet unattached. You must attach them before operating the heater.

WARNING: Do not operate without feet attached. Do operate the heater only in upright position (feet on the bottom, controls on the top), any other position could create a hazardous situation.

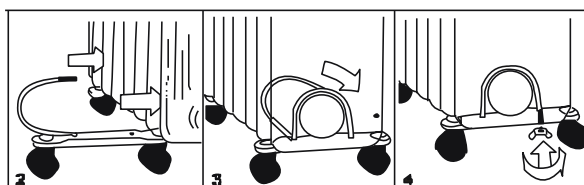


1. Place the radiator body upside-down on a scratch-free location, make sure it is stable and will not fall.
2. Screw off the wing nuts from the U-shaped bolt provided, attach the U-shaped bolt to the U-facing flange between first and second fins (near the front cover).
3. To attach the castor mounting plate to the radiator body, you should insert the threaded ends of the U bolt in the holes on the castor mounting plate.
4. Screw the wing nuts back to the U bolt and fasten the wing nut properly.

Note: do not over tighten, which may cause the damage of radiator flange.

5. Screw off spherical nut from the castor, align the shaft to the hole of the castor mounting plate, insert in, and screw on the spherical nut.
6. Repeat 2, 3, 4 and 5 on the rear of radiator for mounting of the rear castors.

Note: the rear castors must be mounted between the end two fins.



6. USING THE APPLIANCE

BEFORE INITIAL USE

Before using the heater, make sure that it is on a flat and stable surface. Damage may occur if it is placed on an incline or decline

USING YOUR HEATER

1. Set all the controls to OFF position and insert the plug into a socket-outlet with well grounded. Be sure that plug fits firmly.
2. Rotate the thermostat knob clockwise to MAX position and switch the heater on as follow: the switch I for low heat, the switch II for medium heat and the switch III for high heat.
3. When your room reaches the desired temperature, now slowly rotate the thermostat knob counter clockwise until the pilot light goes out. The thermostat can now be left at this setting. As soon as the room temperature has dropped below the set temperature, the unit will switch it self on automatically until the set temperature has been reached again. In this way the room temperature remains constant with the most economical use of electricity.
4. If you want to change the room temperature setting, rotate the thermostat knob clockwise to raise the temperature, or counter clockwise to lower it.
5. This heater includes an overheat protection system that shuts off the heater when parts of the heater are getting excessively hot.
6. To completely shut the heater off, turn all the controls to OFF, and remove plug from the socket-outlet.

7. MAINTENANCE

1. Always remove the plug from the socket-outlet and allow the radiator to cool down before clean the heater.
 2. Wipe radiator with a soft damp (not wet) cloth.
- Warning:
- Do not immerse the heater in water.
- Do not use any cleaning chemicals such as detergents and abrasives.
- Do not allow the interior to get wet as this could create a hazard.
3. To store away the heater, wind the cable round bobbin and store the heater in a clean dry place.
 4. In case of malfunction or doubt, do not try to repair the radiator yourself, it may result in a fire hazard or electric shock.

9. TECHNICAL DETAILS

11 fins: 1000W/1500W/2500W

Fin size: 110x580mm

Color: beige/green

Model identifier(s): FOH-YR11GR/ FOH-YR11BG					
Item	Symbol	Value	Unit	Item	Unit
Heat output			Type of heat input, for electric storage local space heaters only (select one)		
Nominal heat output	Pnom	0,9215	kW	manual heat charge control, with integrated thermostat	NA
Minimum heat output (indicative)	Pmin	0,4647	kW	manual heat charge control with room and/or outdoor temperature feedback	NA
Maximum continuous heat output	Pmax, c	0,9215	kW	electronic heat charge control with room and/ or outdoor temperature feedback	NA
Auxiliary electricity consumption				fan assisted heat output	NA
At nominal heat output	elmax	NA	kW	Type of heat output/room temperature control (select one)	
At minimum heat output	elmin	NA	kW	single stage heat output and no room temperature control	No
In standby mode	elSB	NA	kW	Two or more manual stages, no room temperature control	No
				with mechanic thermostat room temperature control	Yes
				with electronic room temperature control	No
				electronic room temperature control plus day timer	No
				electronic room temperature control plus week timer	No
				Other control options (multiple selections possible)	
				room temperature control, with presence detection	No
				room temperature control, with open window detection	No
				with distance control option	No
				with adaptive start control	No
				with working time limitation	No
				with black bulb sensor	No



Environment friendly disposal

You can help protect the environment!

Please remember to respect the local regulations: hand in the non-working electrical equipment's to an appropriate waste disposal center.



This product is in conformity with norms and standards of European Community.